

# 16T-ES19

## *Vandalism protected number block*

- *for public surroundings*
- *extrem weather conditions*
- *and many more*

16T-ES19

stainless  
steel



### **Description:**

- A vandalism protected number block with 16 buttons in different layouts in very robust processing.
- Almost insensitive to violence.
- Mounting version for prepared mounting shafts.
- Explicitly for surroundings where there is danger by vandalism and/or much customer traffic and/or extrem weather conditions.
- Especially suitable for industrial extreme surroundings.

### **Features:**

- All electronic components and mechanical guides are protected against ingress of dust and water spray (protection IP 65).
- Convenient and positive operation due to the 3,25 mm travel keys with tactile feel.
- Completely in stainless steel construction 1.4301 (buttons, front plate with 3 mm strength).
- Key labelling in laser procedure.
- PCB with electronic components or as a matrix version.
- Carbon contact-technology.
- Predestined for the work in public terminals, in machines and devices wich have to work in extreme damp (even splash water) or very dusty surroundings, and many more.

### **Order number for example:**

**notation:** 16T-ES19 A2  
**article number:** 04005A200700003EE00

ADPZ

6 rue de la Liberté  
 ZI Combeplaine  
 42800 Rive de Gier

Tel : (33) 4 77 83 77 03  
 Fax : (33) 4 77 83 77 16

Web site : [www.adpz.fr](http://www.adpz.fr)

### Mechanical Data:

- Travel 3,25 mm, tactile feel
- Operation force 0,65 N
- 16 buttons, compact layout
- Durability > 10 million ops.
- Storage temperature -40°C - +70°C
- Operation temperature 0°C - +60°C (optional -20°C - +60°C)
- Protection IP65

### Layouts:

- All variants are possible.

### Variants:

- Custom-designed variants are possible (see our web-site).

### Connecting-Variants:

- DIN, PS/2, USB
- Cable straight or spiral-shaped
- Cable length 1,5 m
- Other length are possible

### Detail views:

- Ergonomic, compact 15mm button arrangement on the smallest area.



### Electrical Data:

- Power supply + 5 V/DC, 50 mA
- 2-key roll over
- Autorepeat
- 16k EEPROM memory
- CE-conformable
- EMC-conformable
- RoHS-conformable

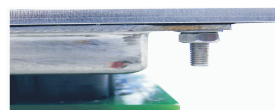
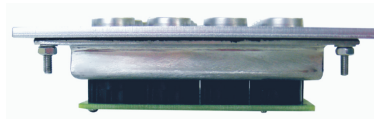
### Principle:

- Contact by a silicon switch map with carbon contacts.

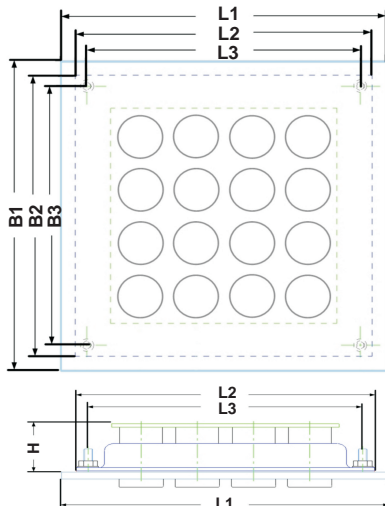
### Use Possibilities:

- Extreme damp (even splash water) surroundings
- Very dusty surroundings
- Test- and measurement systems
- Machine- and device construction
- Trade and craft
- Industry
- Many freequented areas
- and any more

- Very robust steel construction
- Qualitatively excellent processing



### Dimensions:



L1 = 110,95mm  
L2 = 100,95mm  
L3 = 92,95mm

B1 = 110,95mm  
B2 = 100,95mm  
B3 = 92,95mm

H = 20,75mm  
H1 = 23,75mm  
H2 = 3,50mm  
H3 = 3,00mm

More information about the measurements can be downloaded from our web-site.

**16T-ES19**

stainless steel

**ADPZ**

**6 rue de la Liberté  
ZI Combeplaine  
42800 Rive de Gier**

**Tel : (33) 4 77 83 77 03  
Fax : (33) 4 77 83 77 16**

**Web site : [www.adpz.fr](http://www.adpz.fr)**